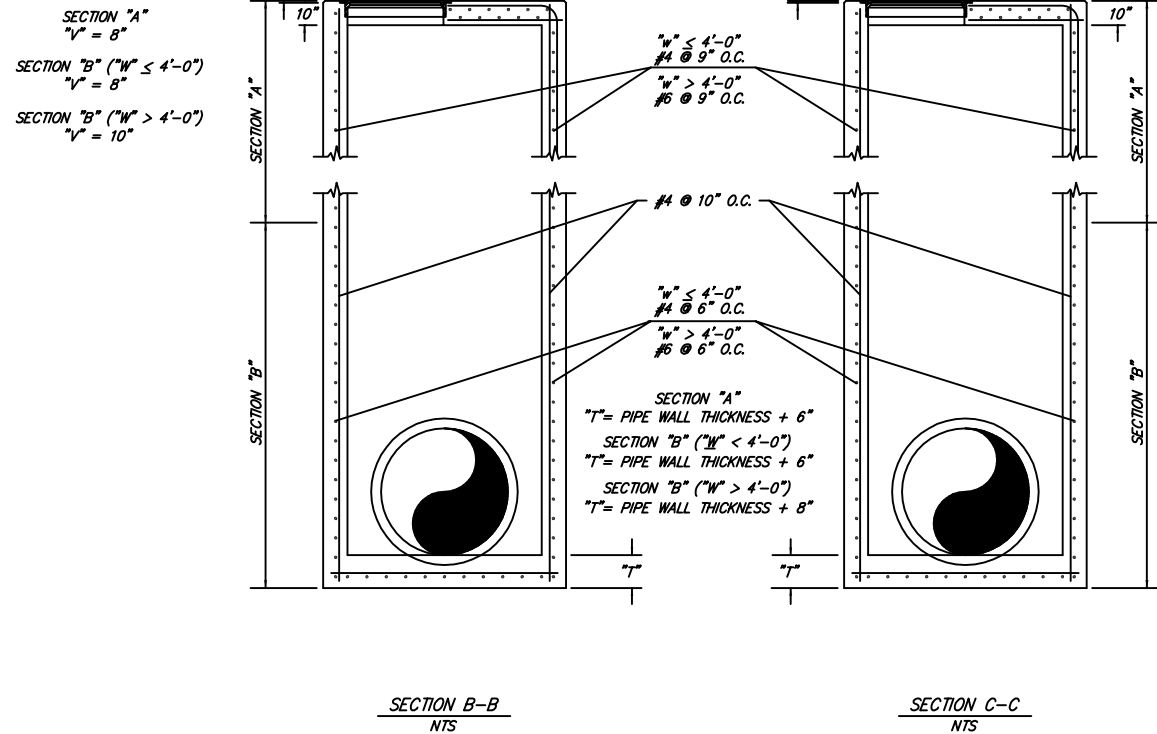
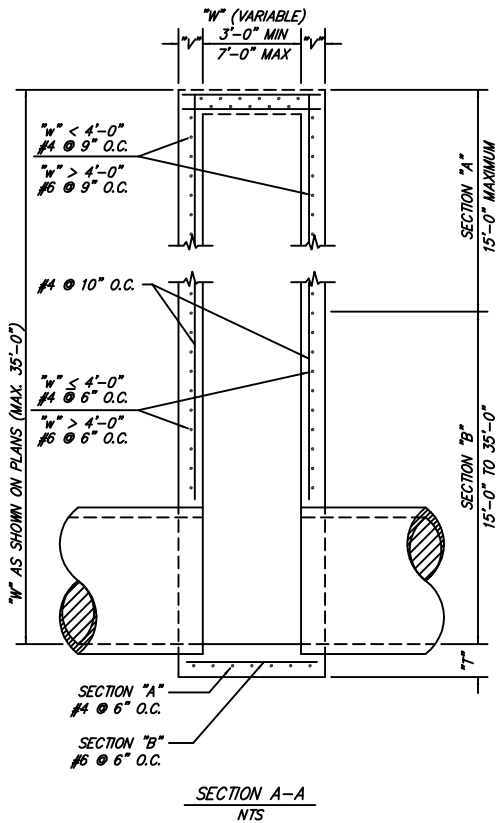
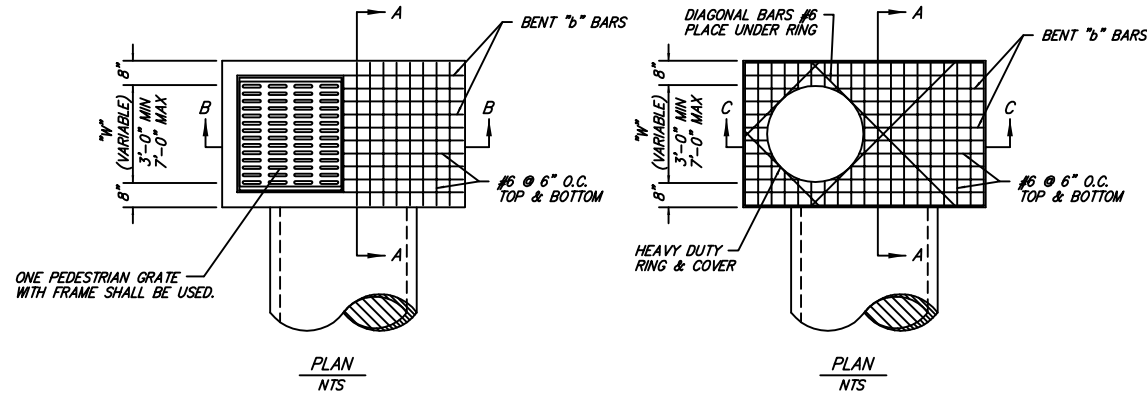
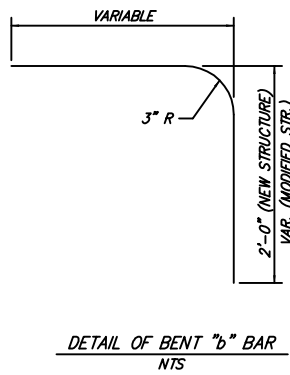


G:\DRAWINGS\00-Standard Details\2012\DWG 4-DR3.dwg 11/05/12-13:37 RBR

GENERAL NOTES

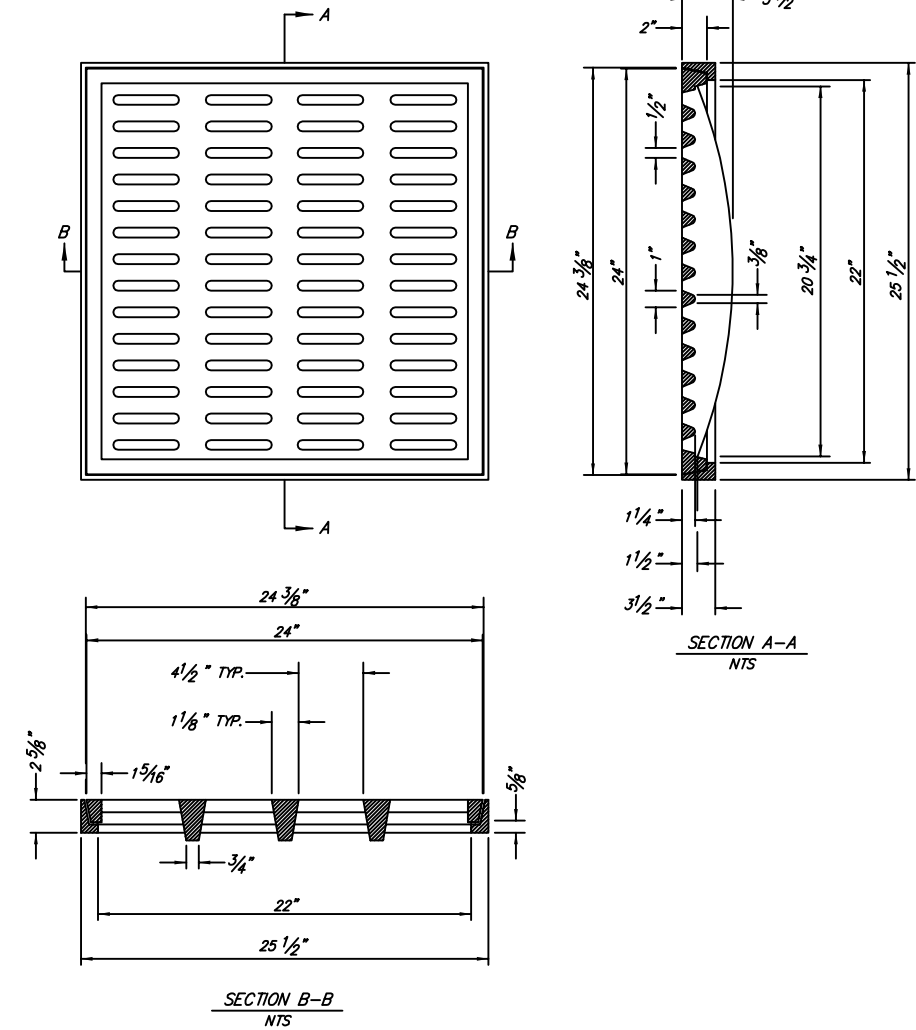
1. THE "D" DIMENSION SHALL MATCH THE FINAL LIFT OF ACHM SURFACE COURSE SHOWN IN THE PLANS WHEN ASPHALT PAVING SURROUNDS THE GRATE OR RING COVER, AND SHALL BE 0" AT OTHER INSTALLATIONS.
2. ALL EXPOSED CORNERS ARE TO HAVE A 3/4" CHAMFER.
3. ALL #4 & #5 REINFORCING BARS ARE TO HAVE A MIN 1-1/2" COVER. ALL LARGER SIZE BARS ARE TO HAVE A 2" MIN COVER.
4. ALL CONCRETE SHALL BE CLASS "AAA" 4000 psi.
5. FORMED CONCRETE SURFACES EXPOSED TO VIEW SHALL BE GIVEN A CLASS 2 RUBBED FINISH. UNFORMED CONCRETE SURFACES EXPOSED TO VIEW SHALL BE GIVEN A CLASS 6 BROOMED FINISH.
6. 2" DIAMETER WEEP HOLES TO BE INSTALLED IN THE INLET WALLS AS DIRECTED BY THE ENGINEER. OUTSIDE ENDS OF WEEP HOLE PIPE SHALL BE WRAPPED WITH FILTER FABRIC TO PREVENT SOIL INTRUSION INTO THE PIPE.
7. DURING CONSTRUCTION OF THE ROADWAY, THE CONTRACTOR SHALL MAINTAIN DRAINAGE INTO OR AROUND THE DROP INLET AS APPROVED BY THE ENGINEER.
8. PRECAST UNITS MAY BE USED FOR INLET BOTTOMS AND WALLS ONLY. TOPS MUST BE CAST-IN-PLACE. ADJUSTMENTS TO BOXES DUE TO GRADE CHANGES WILL BE AT NO ADDITIONAL COST TO THE OWNER.



DETAILS OF DROP INLET OR JUNCTION BOX (TYPE ST)
NTS
DR.3.1

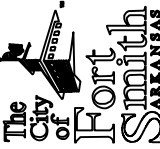
GENERAL NOTES

1. THE PEDESTRIAN GRATE SHALL BE ORIENTED IN THE TOP OF THE DROP INLET SO THAT THE 1/2" OPENINGS ARE PERPENDICULAR TO THE PATH OF PEDESTRIAN TRAVEL.
2. THE PEDESTRIAN GRATE AND FRAME SHALL BE CONSTRUCTED OF CAST IRON AND SHALL CONFORM TO THE REQUIREMENTS OF THE STANDARD SPECIFICATIONS FOR GRAY IRON CASTINGS AASHTO M 105, CLASS 35B, & AASHTO M 306.
3. THE GRATE AND FRAME SHALL NOT BE PAINTED.
4. THE GRATE AND FRAME SHALL BE INSTALLED IN THE DROP INLET IN THE ASSEMBLED POSITION.
5. THE APPROXIMATE WEIGHT OF THE GRATE AND FRAME SHALL BE 211 LBS.
6. THE MINIMUM WATERWAY OPENING SHALL BE 122 SQ. IN.



DETAILS OF PEDESTRIAN GRATE AND FRAME
NTS
DR.3.2

Standard Drawings
DRAINAGE IMPROVEMENTS – INLETS
Public Works Construction



CITY OF FORT SMITH
Engineering Department
623 Garrison Avenue, Room 409
Fort Smith, Arkansas 72901
Phone (479)784-2225 Fax (479)784-2245

Project:	Details
Date:	NOV 2012
Scale:	As Shown
Drawn By:	RBR
Dwg. No.:	DR3
Sheet No.:	4

Revision	Date	BY