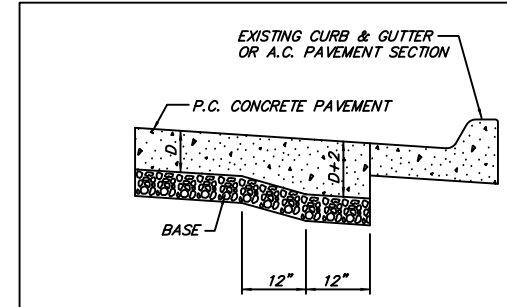


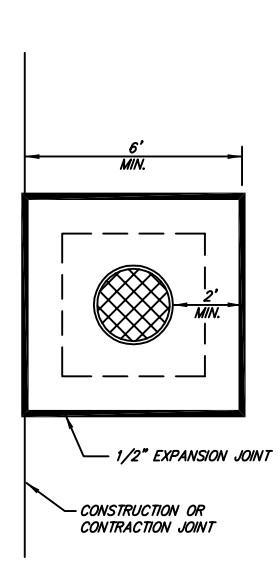
NOTES:

1. JOINTS SHALL BE UNIFORM AND NOT DEVIATE MORE THAN 1/2" FROM THE PLANNED ALIGNMENT WITHIN ANY 24 FOOT SEGMENT.
2. TRANSVERSE CONSTRUCTION JOINT SHALL NOT BE CONSTRUCTED WITHIN 10 FEET OF AN EXPANSION JOINT, CONTRACTION JOINT, OR PLACE OF WEAKNESS.
3. DOWEL AND TIE BARS SHALL BE ALIGNED VERTICALLY AND HORIZONTALLY WITHIN 3 DEGREES OF TRUE ALIGNMENT IN ALL DIRECTIONS, AND PROVIDE A MINIMUM EMBEDMENT LENGTH OF 6 INCHES ON EITHER SIDE OF THE JOINT.
4. ALL MANHOLES AND WATER VALVES SHALL BE BOXED OUT PER DETAILS UNLESS OTHERWISE APPROVED BY ENGINEER.
5. WHENEVER POSSIBLE, INTERSECTION OF JOINTS SHALL BE AT 90°, BUT NOT LESS THAN 60° OR GREATER THAN 140°. OFFSETTING OF JOINTS SHALL NOT BE ALLOWED.
6. CONCRETE PAVEMENT PLACED ALONG EXISTING CURB AND GUTTER OR A.C. PAVEMENT SECTION SHALL HAVE A THICKENED EDGE.
7. CONCRETE PAVEMENT PLACED ALONG PROPOSED CURB AND GUTTER SHALL HAVE A LONGITUDINAL CONSTRUCTION JOINT IF CURB IS NOT PLACED INTEGRALLY WITH PAVEMENT.
8. LOCATION OF JOINTS FOR PROPOSED CURB AND GUTTER SHALL COINCIDE WITH JOINTS IN CONCRETE PAVEMENT.
9. LANE MARKINGS SHALL NOT BE PLACED ON TOP OF ANY JOINT.
10. JOINTS IN INTEGRALLY PLACED CURB SHALL BE SAWCUT AND SEALED.

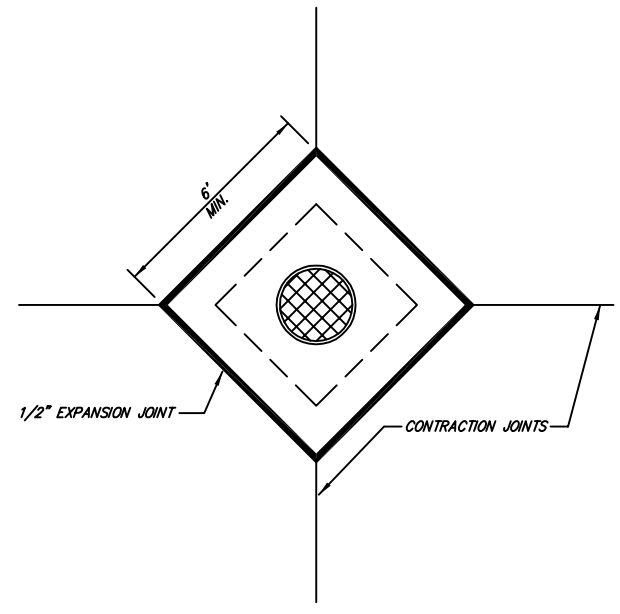
JOINTING LAYOUT FOR INTERSECTION
N.T.S.
ST.5.1



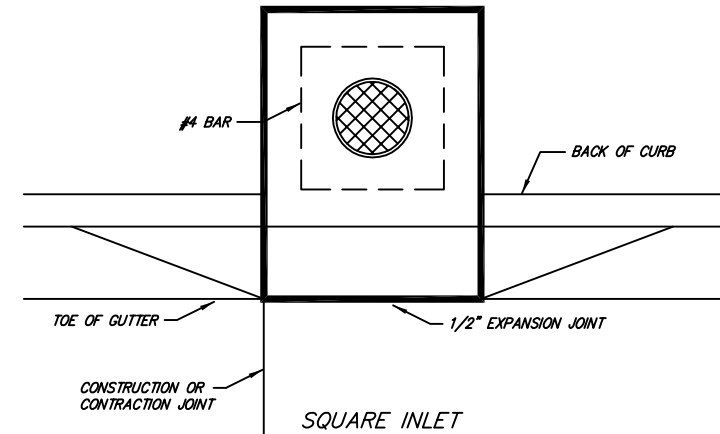
THICKENED EDGE
N.T.S.
ST.5.2



SQUARE MANHOLE BOXOUT

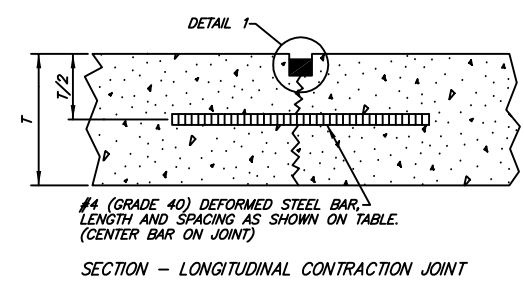


DIAGONAL MANHOLE BOXOUT

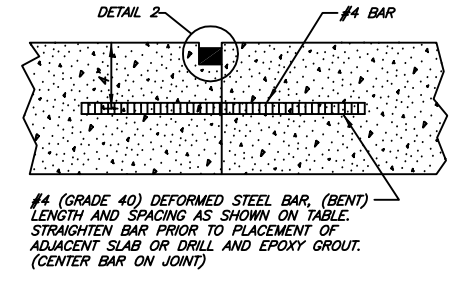


SQUARE INLET
(NO BOXOUT)

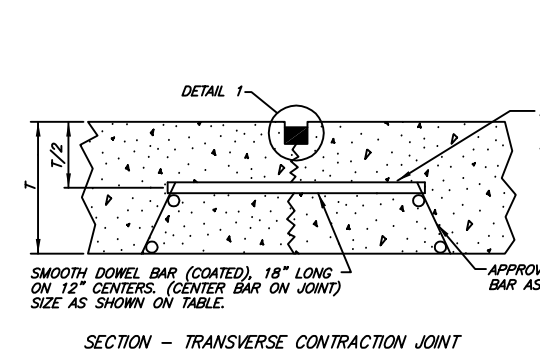
BOXOUTS
N.T.S.
ST.5.3



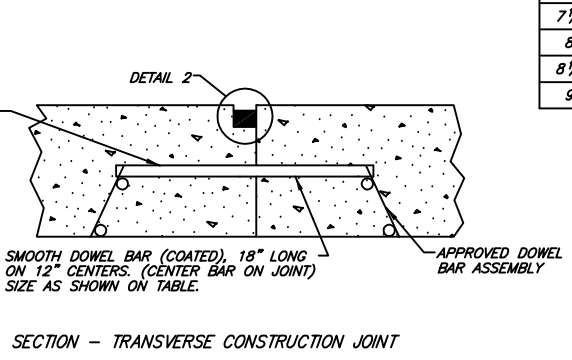
SECTION - LONGITUDINAL CONTRACTION JOINT



SECTION - LONGITUDINAL CONSTRUCTION JOINT



SECTION - TRANSVERSE CONTRACTION JOINT



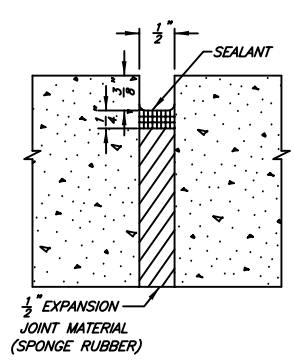
SECTION - TRANSVERSE CONSTRUCTION JOINT

NOTE: DO NOT PLACE TIE-BAR WITHIN 15" OF A TRAVERSE JOINT.

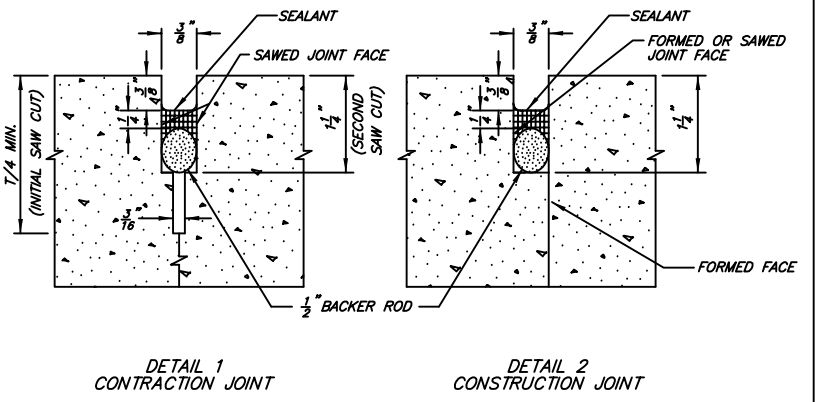
TIEBAR DIMENSIONS					
SLAB DEPTH INCH	TIEBAR SIZE INCH	TIEBAR SPACING			
		DISTANCE TO NEAREST FREE EDGE OR TO NEAREST JOINT WHERE MOVEMENT CAN OCCUR			
		10'	12'	14'	24'
6	1/2 X 24	30"	30"	30"	23"
6 1/2	1/2 X 24	30"	30"	30"	21"
7	1/2 X 24	30"	30"	30"	20"
7 1/2	1/2 X 24	30"	30"	30"	18"
8	1/2 X 24	30"	30"	30"	17"
8 1/2	1/2 X 24	30"	30"	28"	16"
9	1/2 X 30	36"	36"	36"	24"

DOWEL SIZE	
SLAB DEPTH INCH	DOWEL DIAMETER INCH
6	3/4
7	7/8
8	1
9	1 1/4

JOINTING DETAILS
N.T.S.
ST.5.4



EXPANSION JOINT DETAIL
N.T.S.
ST.5.5



LONGITUDINAL OR TRANVERSE JOINT DETAILS
N.T.S.
ST.5.6

11/05/12-13:48 RBR 19-ST5.dwg G:\DRAWINGS\00-Standard Details\2012\DWG

Revision	Date	BY

Standard Drawings
STREET IMPROVEMENTS - P.C. CONC. PAVEMENT
Public Works Construction



CITY OF FORT SMITH
Engineering Department
623 Garrison Avenue, Room 409
Fort Smith, Arkansas 72901
Phone (479)784-2225 Fax (479)784-2245

Project:	Details
Date:	NOV 2012
Scale:	As Shown
Drawn By:	RBR
Dwg. No.:	ST5
Sheet No.:	19