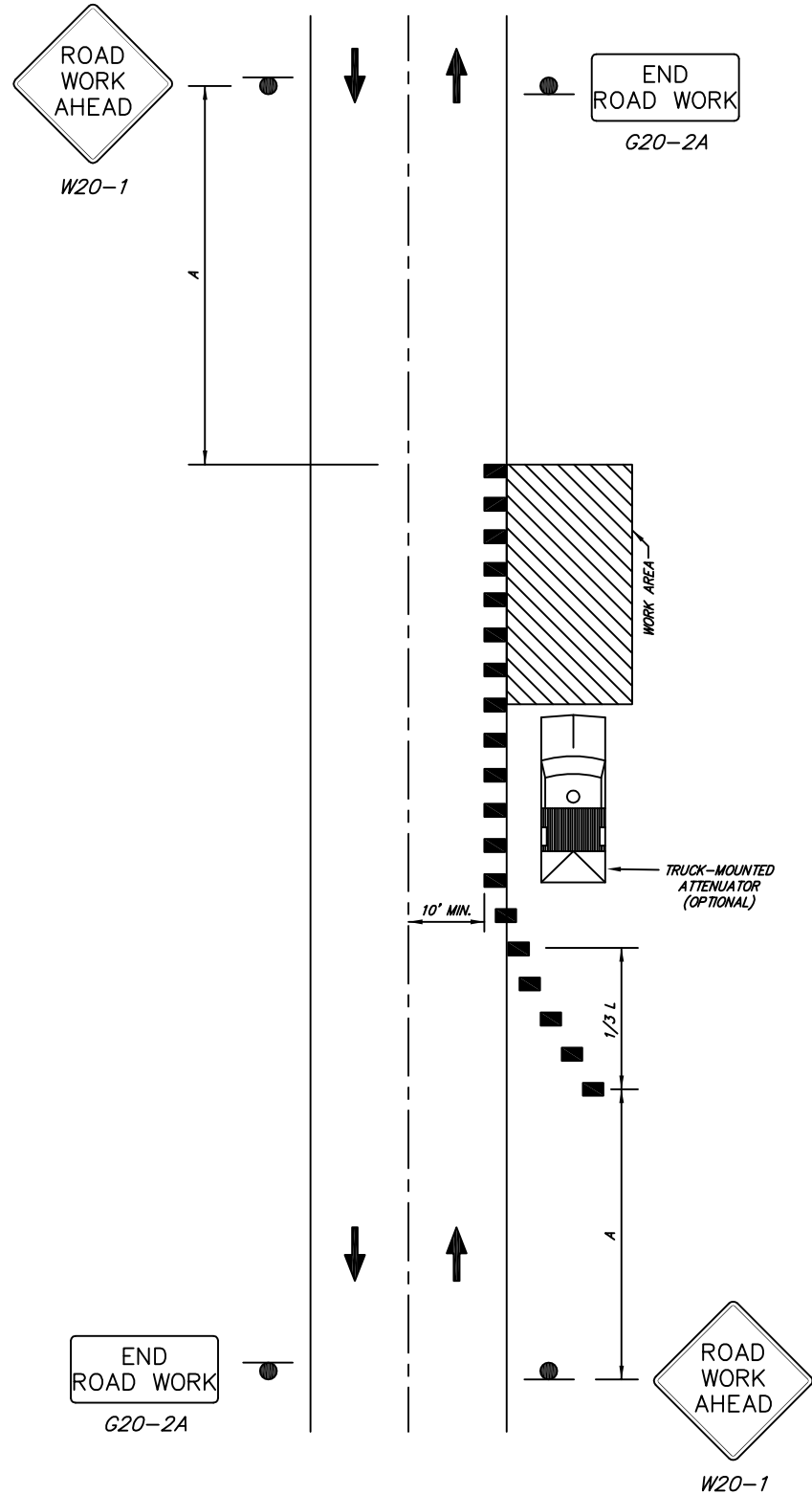


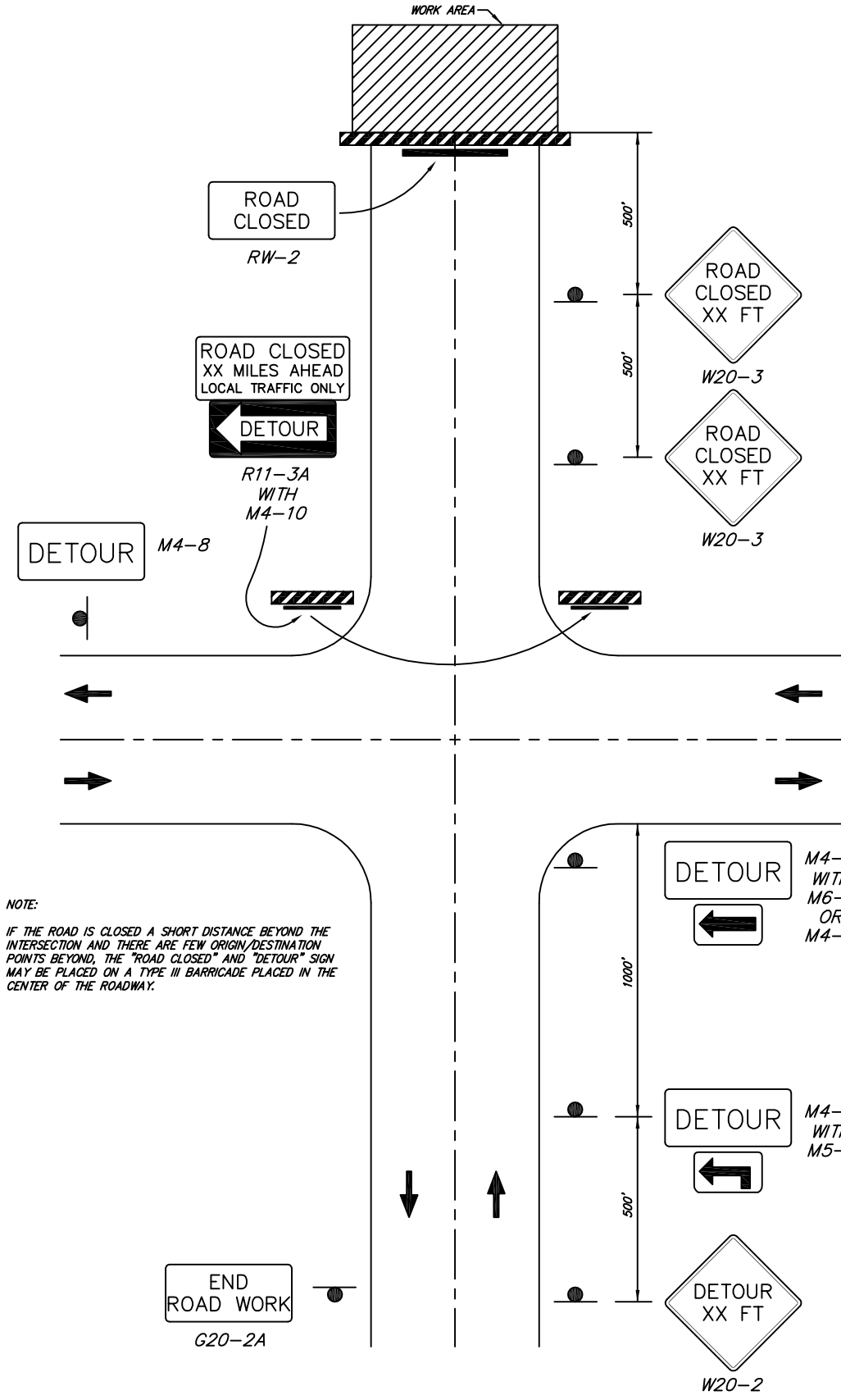
NOTES:

- WHERE THE OPPOSITE SHOULDER IS SUITABLE FOR CARRYING MOTOR VEHICLE TRAFFIC AND OF ADEQUATE WIDTH, LANES MAY BE SHIFTED BY USE OF CLOSELY SPACED CHANNELIZING DEVICES, PROVIDED THAT THE MINIMUM LANE WIDTH OF 10' IS MAINTAINED.
- FOR SHORT DURATION WORK, THE TAPER AND CHANNELIZING DEVICES MAY BE OMITTED IF A SHADOW VEHICLE WITH ACTIVATED ROTATING OR STROBE LIGHTS IS USED.



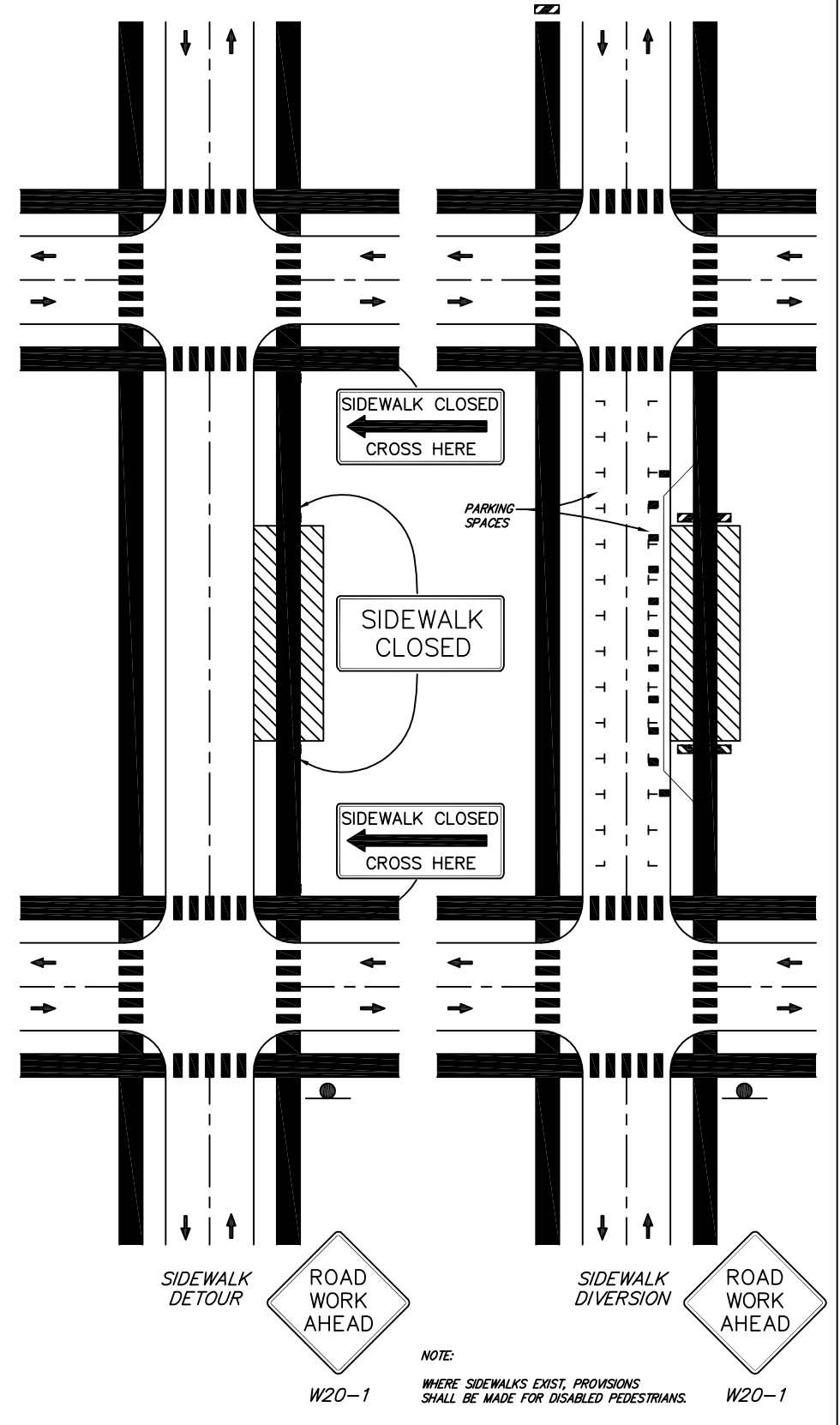
SHOULDER WORK WITH MINOR ENCROACHMENT ON LOW SPEED ROADWAY (MUTCD TA-6)

N.T.S.
TC. 4.1



ROAD CLOSURE WITH OFF-SITE DETOUR (MUTCD TA-8)

N.T.S.
TC. 4.2



SIDEWALK DETOUR OR DIVERSION (MUTCD TA-28)

N.T.S.
TC. 4.3

By	Date	Revision

Standard Drawings
TRAFFIC CONTROL
Public Works Construction



CITY OF FORT SMITH
Engineering Department
623 Garrison Avenue, Room 409
Fort Smith, Arkansas 72901
Phone (479)784-2225 Fax (479)784-2245

Project:	Details
Date:	NOV 2012
Scale:	As Shown
Drawn By:	RBR
Dwg. No.:	TC4
Sheet No.:	27

C:\DRAWINGS\00-Standard Details\2012\DWG\27-TC4.dwg 11/05/12-13:52 RBR