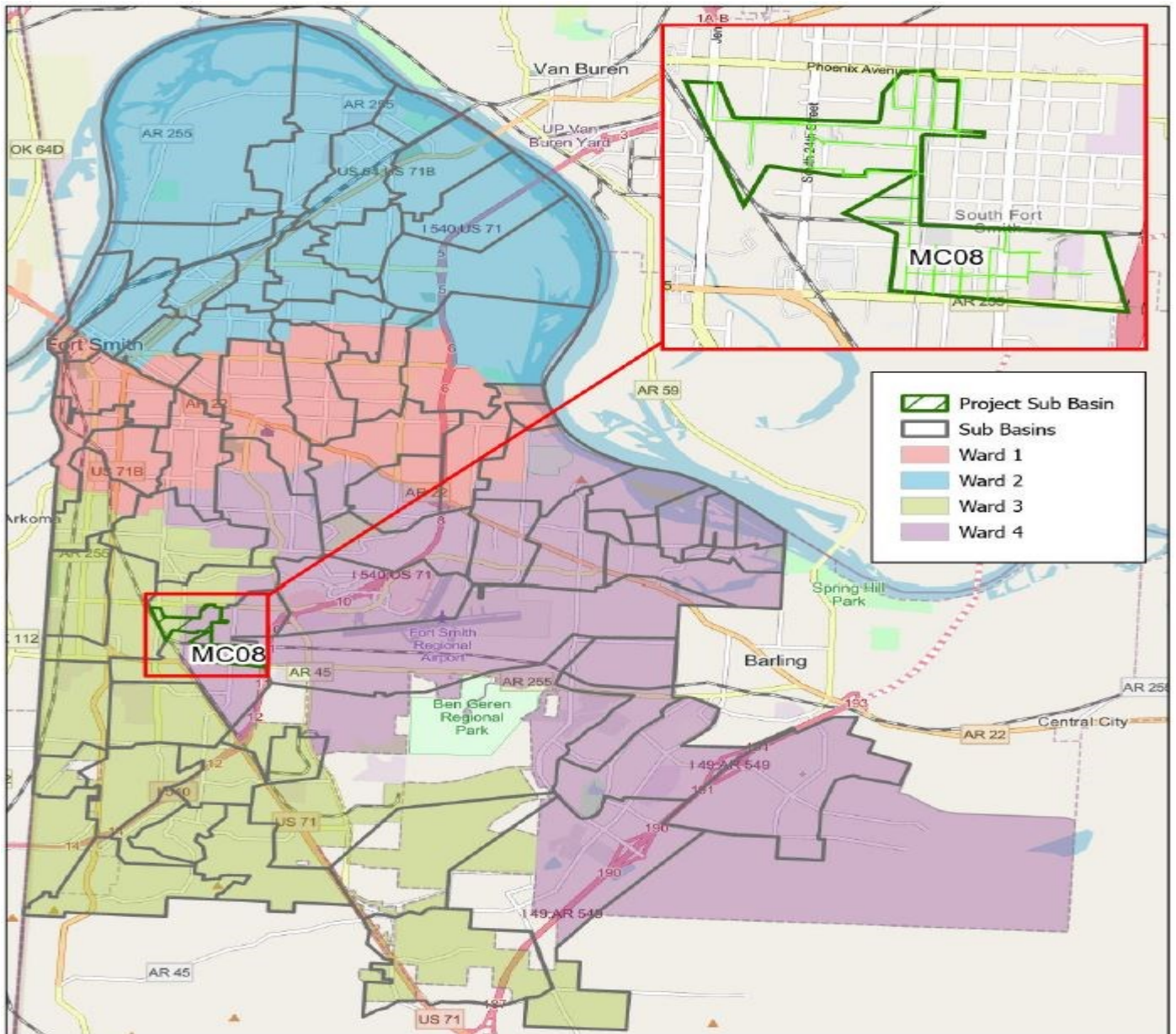


2017 SSA REMEDIAL MEASURES, SUB-BASIN MC08 PROJECT NO. 19-17-C1

SUMMARY

The scope of this project included approximately 2,301 linear feet of 8-inch diameter and 92 linear feet of 12-inch diameter sanitary sewer line replacement using open-cut methods, 2,166 linear feet of 8-inch sanitary sewer line replacement using pipe-burst methods, 1,831 linear feet of 8-inch CIPP pipe lining, and the replacement and lining of 15 48-inch diameter manholes.

LOCATION MAP



2017 SSA REMEDIAL MEASURES, SUB-BASIN MC08 PROJECT NO. 19-17-C1

PROJECT COST

- Original Construction Contract Amount: \$3,145,779.00
- Change Order No. 1: - \$250,017.15 & - 94 Days
- Adjusted Contract Amount: \$2,895,761.85

PROJECT SCHEDULE

- Notice To Proceed: November 20, 2024
- Substantial Completion (Contract): December 31, 2025
- Substantial Completion (Actual): October 13, 2025
- Final Completion (Contract): January 30, 2026
- Final Completion (Actual): October 28, 2025

PROJECT INFORMATION

- Construction Contractor: Krapff-Reynolds Construction Co
- Full Time Inspection Services: In-House



**2017 SSA REMEDIAL MEASURES, SUB-BASIN MC08
PROJECT NO. 19-17-C1**

PROJECT REPORT

DESCRIPTION	TOTAL ESTIMATED QUANTITY	TOTAL COMPLETED QUANTITY
Sanitary Sewer Main Line (LF)	6390.00	7695.00
Manholes Replacement/Rehabilitation (EA)	38	37

Note:

In the years following the completion of the project design, City of Fort Smith Water Utilities (In-House) replaced several sanitary sewer mains and manholes due to issues such as structural collapse and sanitary sewer overflows (SSOs). As a result, the City of Fort Smith instructed the Contractor not to replace those sewer mains or manholes.

On the other hand, certain sanitary sewer mains deteriorated following the completion of the project design. Although these mains were not included in the original project scope, City of Fort Smith Water Utilities added them to the scope, and the Contractor replaced them.

2017 SSA REMEDIAL MEASURES, SUB-BASIN MC08 PROJECT NO. 19-17-C1



**PRE-CCTV VIDEO INSPECTION OF
SANITARY SEWER MAIN
(ROOT INTRUSION OBSERVED)**



**PRE-CCTV VIDEO INSPECTION OF SANITARY
SEWER LATERAL CONNECTION**



**MINOR POINT-BASED REPAIR PROCESS
FOR SANITARY SEWER MAIN LINES**



**POST-REPAIR SITE RESTORATION FOR
SANITARY SEWER MAIN LINES**

2017 SSA REMEDIAL MEASURES, SUB-BASIN MC08 PROJECT NO. 19-17-C1



REPLACEMENT OF SANITARY SEWER MAIN LINE USING PIPE BURSTING METHOD



EXISTING MANHOLE CONDITION BEFORE REHAB OR REPLACEMENT WORK



PROCEDURE OF REHABILITATING EXISTING MANHOLES

**2017 SSA REMEDIAL MEASURES, SUB-BASIN MC08
PROJECT NO. 19-17-C1**



**SITE RESTORATION PROCESS AFTER REPLACEMENT/REHABILITATION OF
SANITARY SEWER SYSTEM**

2017 SSA REMEDIAL MEASURES, SUB-BASIN MC08 PROJECT NO. 19-17-C1



POST-CCTV INSPECTION PROCESS FOR SANITARY SEWER MAIN LINES